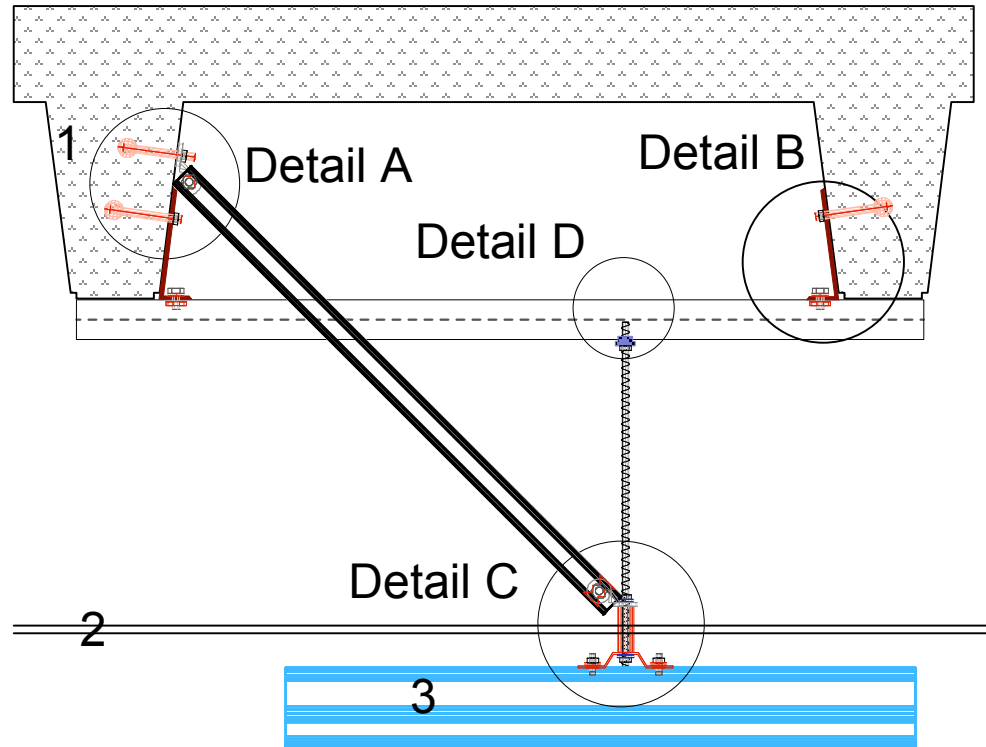


List of Materials

ID	Qty	Description
A*	3	Hilti Kwik Bolt TZ, 1/2", Carbon Steel (304586)
B	0	Hilti Zinc Rod Coupler, 1/2" (257985)
C	6	Hilti Nut 1/2" (335551)
D	1	Hilti 1/2" Threaded Rod (309393)
E	1	Guldmann Standard Bracket with Tubing
F	2	Lock Washer 1/2"
G	4	Hilti Bolt 1" x 1/2" (311953)
H	2	Hilti Seismic Bracket, Base Half, 1/2" (333308)
I	4	Hilti MQM Strut Nut 1/2" (377883)
J	1	Hilti Strut HS-13/16" 14 Gauge (309911)
K	2	Hilti Washer 1/2" (335554)
L	1	Hilti MQA-F Saddle Nut 1/2" (377886)
M	2	Bent Plate, Fabricated to Engr spec
N	1	Back-to-back Unistrut, sized to joist span

ID	Building Components
1	Concrete Deck with Joists
2	Ceiling Tile
3	Guldmann Rail

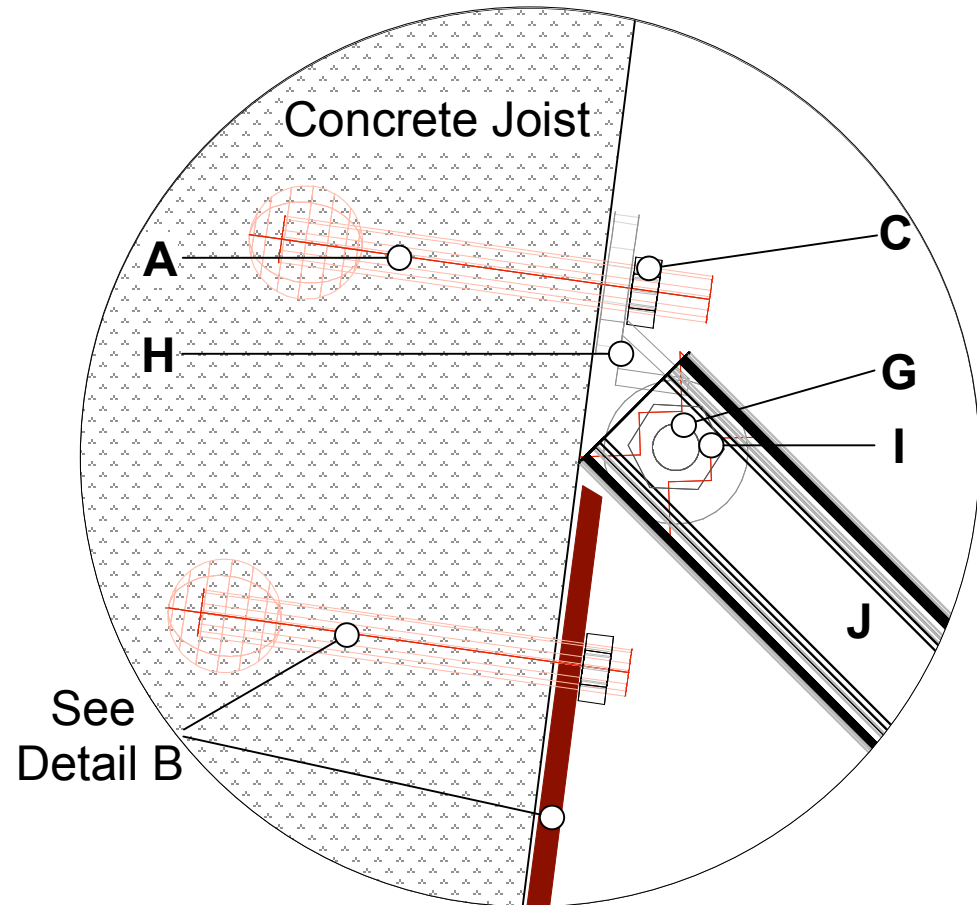
* Min. 3" embedment, in 3000 psi concrete



Approved: _____

Concrete Joist	Rated Load: 272kg / 600#
Alpha Modalities <small>Advocating Zero Manual Transfers in Healthcare</small> PMB 3326 10002 Aurora Ave N #36 Seattle, WA 98133-9334 800.273.5749 Fax 206.374.2476 www.alphamodalities.com	Attachment Bracket w/ Joist Span & Stabilizer Using Hilti Parts
Scale: NTS	Revision: September 5, 2006
Drawn By: Sam Krause	Date: February 23, 2006

List of Materials		
ID	Qty	Description
A*	1	Hilti Kwik Bolt TZ, 1/2", Carbon Steel (304586)
B	0	Hilti Zinc Rod Coupler, 1/2" (257985)
C	1	Hilti Nut 1/2" (335551)
D	0	Hilti 1/2" Threaded Rod (309393)
E	0	Guldmann Standard Bracket with Tubing
F	0	Lock Washer 1/2"
G	1	Hilti Bolt 1" x 1/2" (311953)
H	1	Hilti Seismic Bracket, Base Half, 1/2" (333308)
I	1	Hilti MQM Strut Nut 1/2" (377883)
J	1	Hilti Strut HS-13/16" 14 Gauge (309911)
K	0	Hilti Washer 1/2" (335554)
L	0	Hilti MQA-F Saddle Nut 1/2" (377886)
M	0	Bent Plate, Fabricated to Engr spec
N	0	Back-to-back Unistrut, sized to joist span

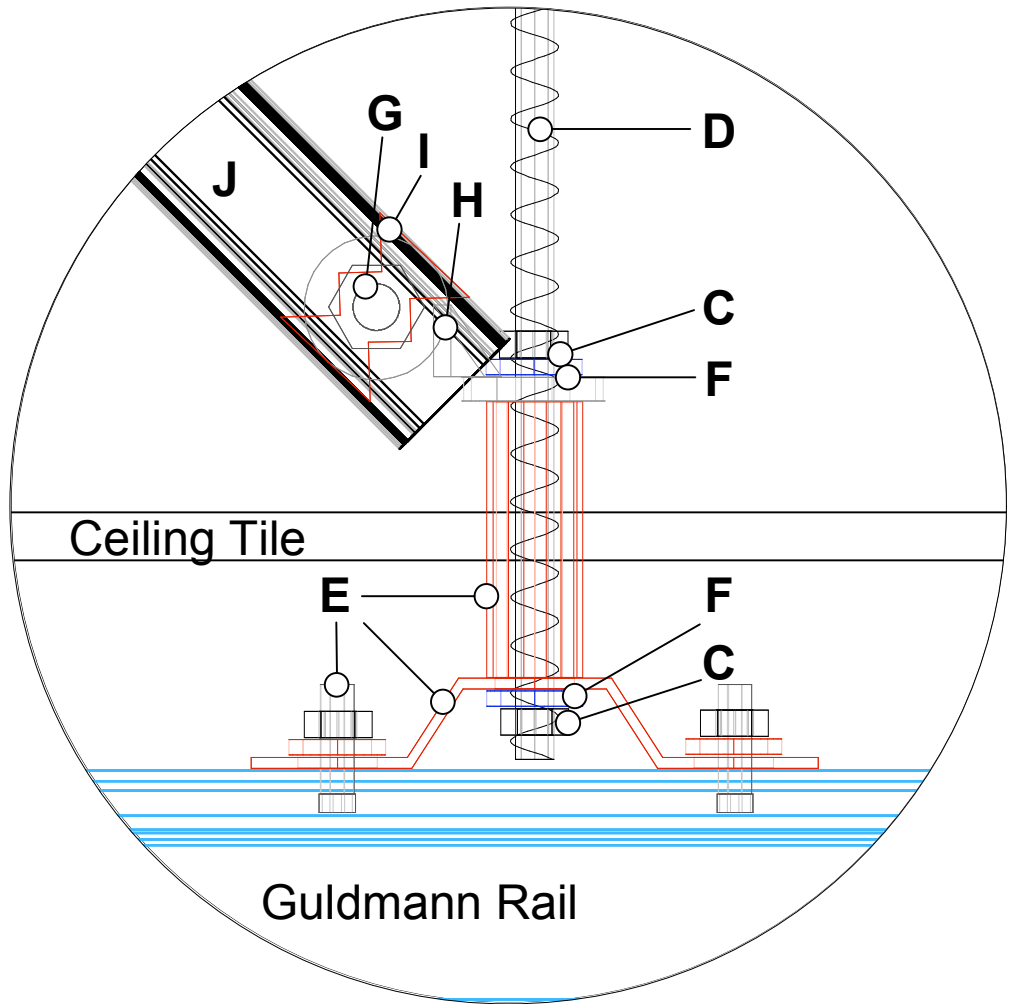


* Min. 3" embedment, in 3000 psi concrete

NOTE: Hilti Kwik Bolt TZ must be positioned 7 inches apart, either horizontally or vertically, when installed on the same joist.

Concrete Joist	Rated Load: 272kg / 600#
Alpha Modalities <small>Advocating Zero Manual Transfers in Healthcare</small> PMB 3326 10002 Aurora Ave N #36 Seattle, WA 98133-9334 800.273.5749 Fax 206.374.2476 www.alphamodalities.com	Detail A - Seismic Attachment Bracket w/ Joist Span & Stabilizer Using Hilti Parts
Scale: NTS	Revision: August 31, 2006
Drawn By: Sam Krause	Date: February 23, 2006

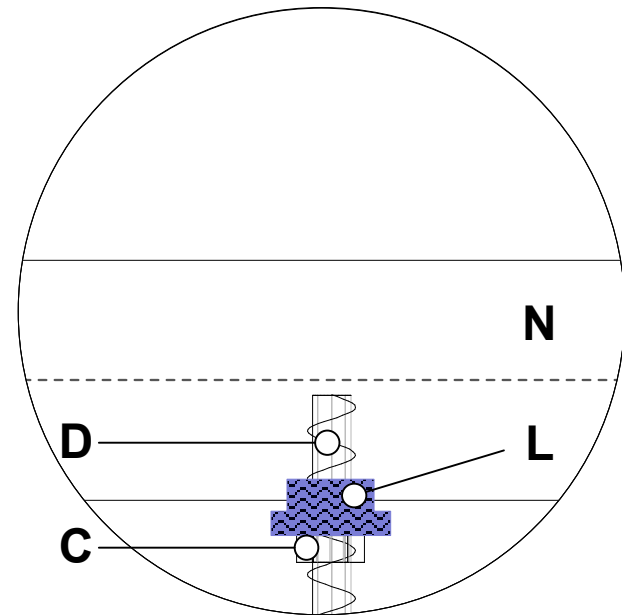
List of Materials		
ID	Qty	Description
A*	0	Hilti Kwik Bolt TZ, 1/2", Carbon Steel (304586)
B	0	Hilti Zinc Rod Coupler, 1/2" (257985)
C	2	Hilti Nut 1/2" (335551)
D	1	Hilti 1/2" Threaded Rod (309393)
E	1	Guldmann Standard Bracket with Tubing
F	2	Lock Washer 1/2"
G	1	Hilti Bolt 1" x 1/2" (311953)
H	1	Hilti Seismic Bracket, Base Half, 1/2" (333308)
I	1	Hilti MQM Strut Nut 1/2" (377883)
J	1	Hilti Strut HS-13/16" 14 Gauge (309911)
K	0	Hilti Washer 1/2" (335554)
L	0	Hilti MQA-F Saddle Nut 1/2" (377886)
M	0	Bent Plate, Fabricated to Engr spec
N	0	Back-to-back Unistrut, sized to joist span



Concrete Joist	Rated Load: 272kg / 600#
Alpha Modalities <i>Advocating Zero Manual Transfers in Healthcare</i> PMB 3326 10002 Aurora Ave N #36 Seattle, WA 98133-9334 800.273.5749 Fax 206.374.2476 www.alphamodalities.com	Detail C - Rail Bracket Attachment Bracket w/ Joist Span & Stabilizer Using Hilti Parts
Scale: NTS	Revision: August 31, 2006
Drawn By: Sam Krause	Date: February 23, 2006

List of Materials

ID	Qty	Description
A*	0	Hilti Kwik Bolt TZ, 1/2", Carbon Steel (304586)
B	0	Hilti Zinc Rod Coupler, 1/2" (257985)
C	1	Hilti Nut 1/2" (335551)
D	1	Hilti 1/2" Threaded Rod (309393)
E	0	Guldmann Standard Bracket with Tubing
F	0	Lock Washer 1/2"
G	0	Hilti Bolt 1" x 1/2" (311953)
H	0	Hilti Seismic Bracket, Base Half, 1/2" (333308)
I	0	Hilti MQM Strut Nut 1/2" (377883)
J	0	Hilti Strut HS-13/16" 14 Gauge (309911)
K	0	Hilti Washer 1/2" (335554)
L	1	Hilti MQA-F Saddle Nut 1/2" (377886)
M	0	Bent Plate, Fabricated to Engr spec
N	1	Back-to-back Unistrut, sized to joist span



Concrete Joist	Rated Load: 272kg / 600#
Alpha Modalities <small>Advocating Zero Manual Transfers in Healthcare</small> PMB 3326 10002 Aurora Ave N #36 Seattle, WA 98133-9334 800.273.5749 Fax 206.374.2476 www.alphamodalities.com	Detail D - Rod Support Attachment Bracket w/ Joist Span & Stabilizer Using Hilti Parts
Scale: <p style="text-align: center; font-size: 1.2em;">NTS</p>	Revision: <p style="text-align: center; font-size: 1.2em;">August 31, 2006</p>
Drawn By: <p style="text-align: center; font-size: 1.2em;">Sam Krause</p>	Date: <p style="text-align: center; font-size: 1.2em;">February 23, 2006</p>